



MAPSMART® FOR ANDROID FIELD DATA COLLECTION

Map with a Smart App
Bring Your Own Device

Store Heights and More
Integrate with GPS

PROFESSIONAL MEASUREMENT



Map, Measure and Position Smarter

The next generation of mapping is here. MapSmart on Android has all of the sophisticated mathematics and technology required to collect reliable, professional field data and even calculate stockpile volumes as easy as using a smartphone app.



Bring Your Own Device

Run MapSmart on your Android device, use any LTI laser with wireless comm and import data into your CAD or GIS program including ArcGIS®.



Map with a Smart App

Whether you are a novice or a GIS professional, MapSmart's workflow is as intuitive as any smartphone app and includes built-in help.



Store Heights and More

Quickly and easily add attribute data including heights, spans, slope-grade and customer built notations to every data point you collect.



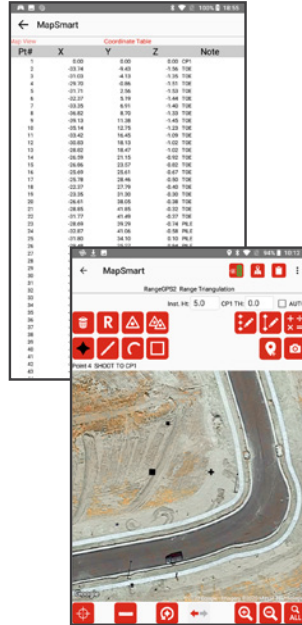
Integrate with GPS

Use the GPS data from your Android device's Location Services or pair your high accuracy GPS device for the most efficient way to map.

Improved Workflow Thanks to Android

Take advantage of all the benefits from smart device technology and embrace an easier way to map.

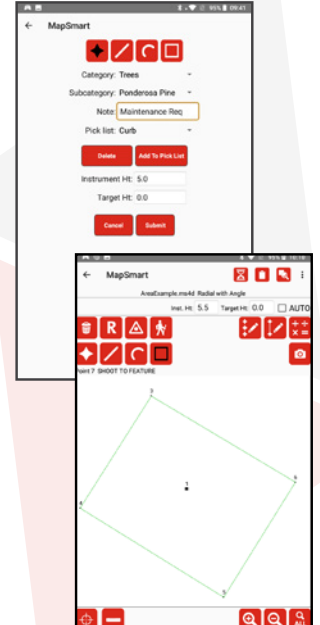
- Transfer your field data wirelessly and say goodbye to cables
- Automatically receive feature updates through Google Play
- Solve problems right in the field with built-in help and support



Map Point, Line and Area Features

Make your survey visual by using line, curve and area features to see your map take shape as you go.

- Map and notate any individual point or group of points using a laser or GPS only, and change point of colors
- Transform a mapped feature type to any other feature type in two steps
- Draw an outline around irregular shapes using the area feature



REMOTE FIRE

Improve stability and targeting by using the laser's remote fire capability from your tablet.



FIELD CALCULATIONS

Make calculations right in the field that can eliminate the need for post-processing.



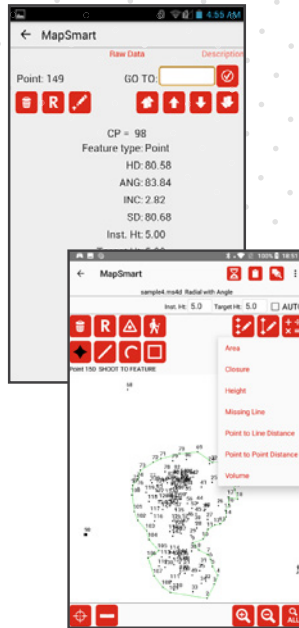
CAPTURE IMAGES

Include photos of your mapped features using the Android device or the TruPoint 300.

Real-Time Calculations

When time is money, you can't beat real-time data.

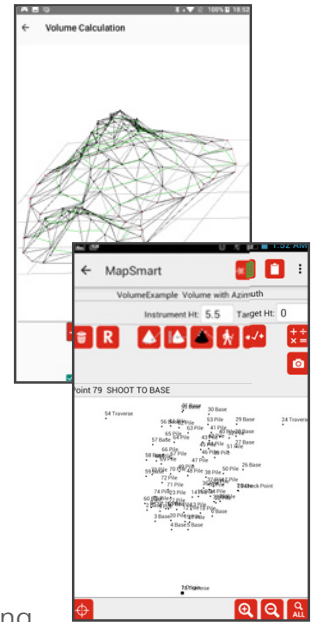
- Displays the measurement values between any two points or from a point to any line
- Calculates the perimeter and area of any boundary
- Generates a closure ratio to verify the accuracy of your traverse
- Report volume and tonnage data right in the field without any post-processing steps



Stockpile Volumes and Tonnage Data

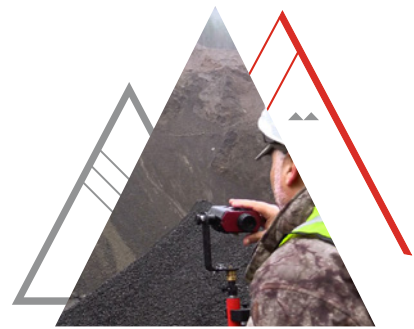
Easily measure and calculate the volume and tonnage of any material, even if it's stored in a bin or up against a wall.

- Eliminates guesswork, so you know exactly what you have on hand
- Measure as often as you want and stay in control of your own quantities
- Collects measurements from a safe location instead of requiring you to occupy loose and potentially dangerous material



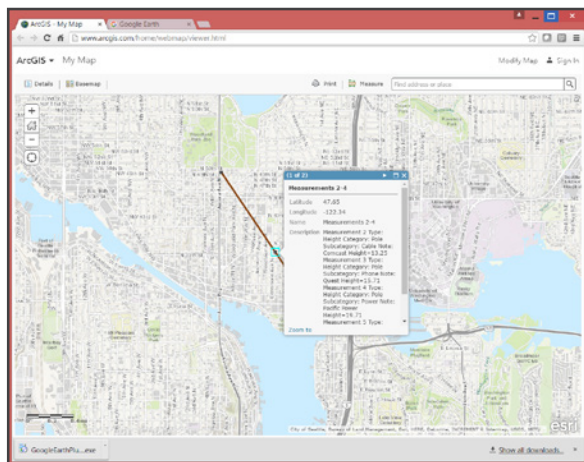
Report Formats

- GPS Exchange (*.gpx)
- Portable Document Format (*.pdf)
- CAD File (*.dxf)
- ASCII Plain Text (*.asc)
- Text Report (*.txt)
- Spreadsheet Report (*.csv)
- Raw Data (*.raw)
- Graphic Small (*.png)
- Graphic Large (*.png)
- KML (*.kml)



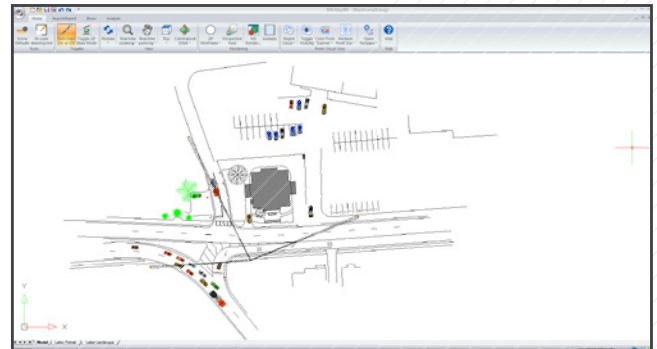
Import Field Data Into Maps

MapSmart gives you the ability to import your georeferenced data into Esri's ArcGIS®, Google® Earth and other mapping applications.

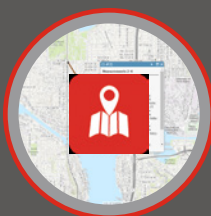


Field to Office Synergy

MapSmart reports can be transferred to any CAD-based software you already have. LTI does offer IMS Map360, a robust yet affordable desktop program.



REPOSITIONING
Easily pick up and move control points using a simple, step-by-step traverse routine.



SPATIAL AWARENESS
Display background maps and change GPS point colors.

**ArcGIS® maps*



SAVE AND SEND
Eliminate cables to transfer your data and just simply email it all.

POPULAR HARDWARE PACKAGES

TruPulse® 360° R

TruPulse® 200X + TruAngle®

TruPoint™ 300



Range	3,280 ft (1000 m)	6,233 ft (1900 m)	1,000 ft (300 m)
Range Accuracy	±1 ft (30 cm) Typical	±1.5 in (4 cm) Typical	±0.04 in (1 mm) Typical
Inclination Accuracy	± 0.25° Typical	± 0.1° Typical	± 0.1° Typical
Power	(1) CR123A Battery	(1) CR123A Battery for TruPulse (2) AA Battery for TruAngle	Li-ion rechargeable
Azimuth/Angle Accuracy	± <0.5° RMS; typical	ANG ±0.05°	ANG ±0.1°
Communication	Bluetooth®	Bluetooth®	WLAN
Mapping Method	Radial with Azimuth	Radial with Angle	

*MapSmart is also compatible with TruPulse 360° and 200 models

LTI Android Tablet

*Any 6.0+ and newer Android tablet can run MapSmart



IP Rating	IP 68
Communication	Bluetooth and/or WLAN
GPS	10 to 16 ft (3 to 5 m)
Front/Rear Camera	2.0 MP/13.0 MP

MapSmart on Android Specifications

Operating Systems	Android version 6.0 - 10.0
Connectivity	Bluetooth and/or WLAN
Compatible Lasers	TruPulse lasers with Bluetooth and TruPoint 300
Supported Languages	English (a template is available for translation)

© LTI 2021 1309 EN



info@lasertech.com 1.303.649.1000
lasertech.com/Professional-Measurement