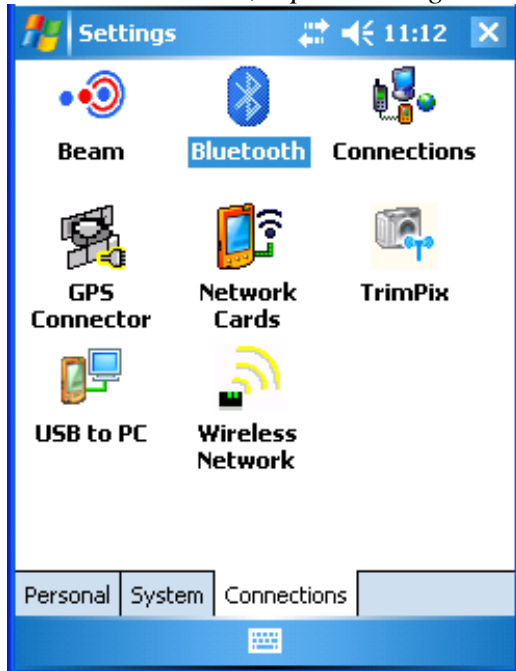


Tech Tip

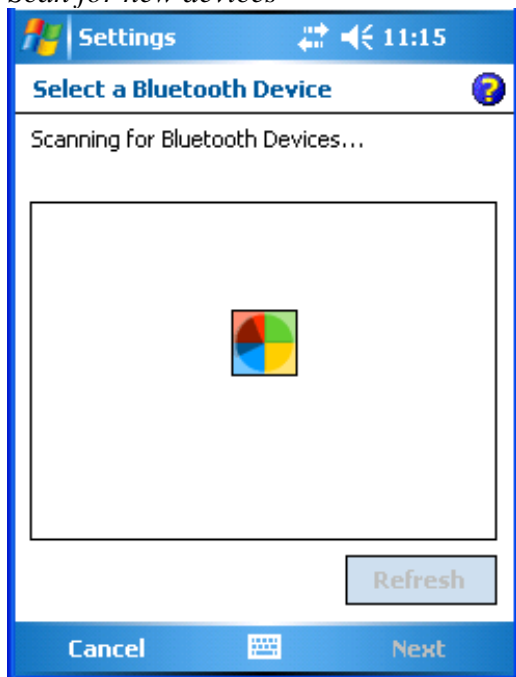
Configuring and collecting features with a TruPulse Laser in ArcPad

Connect Laser to data collector with Bluetooth

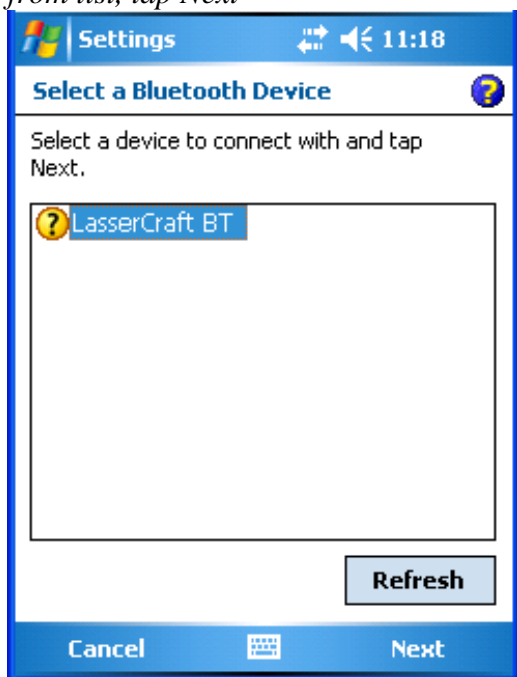
On the GPS device, tap on Settings → Connections → Bluetooth



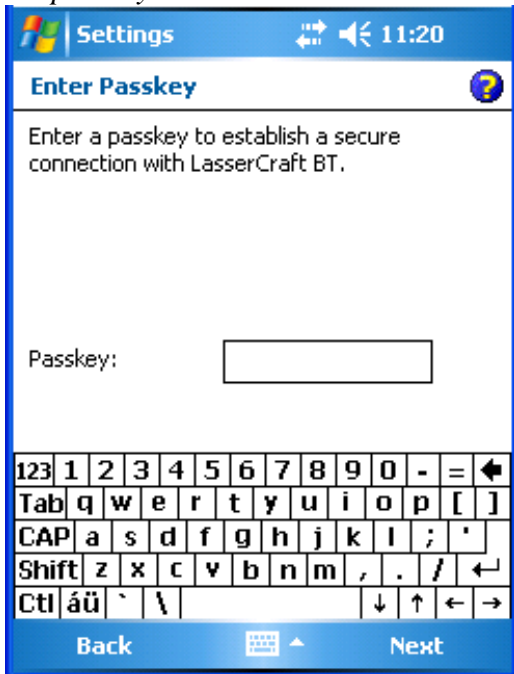
Scan for new devices



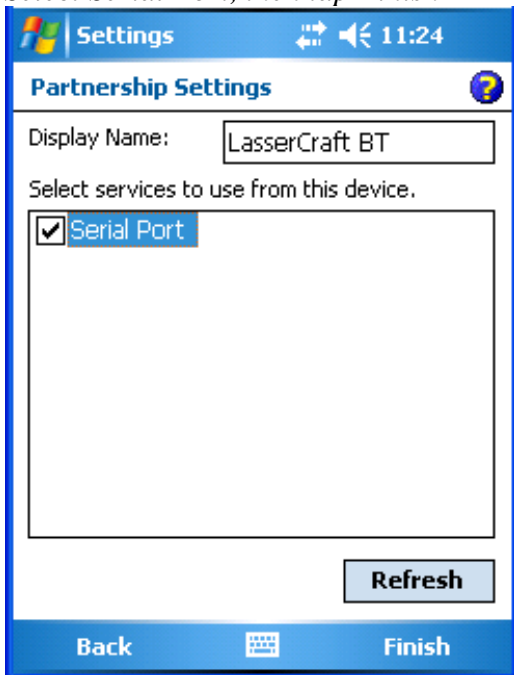
*Select Laser
from list, tap Next*



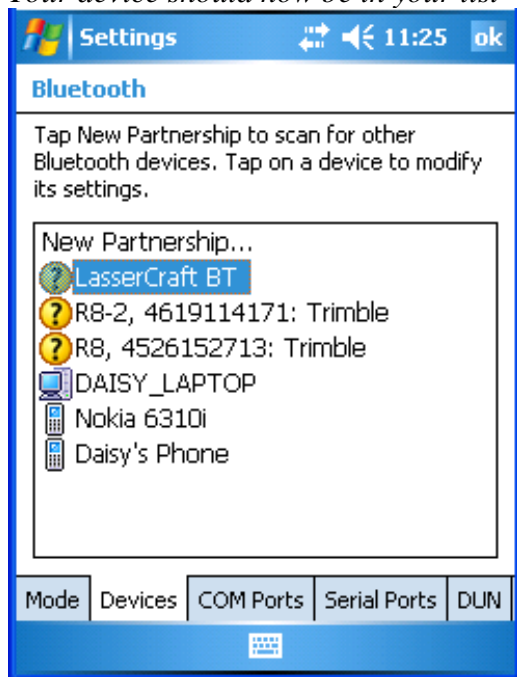
If add a passkey comes up, do not enter a passkey. Tap Next. If Next is grayed out, enter “1234” as the passkey.



Select Serial Port, then tap Finish



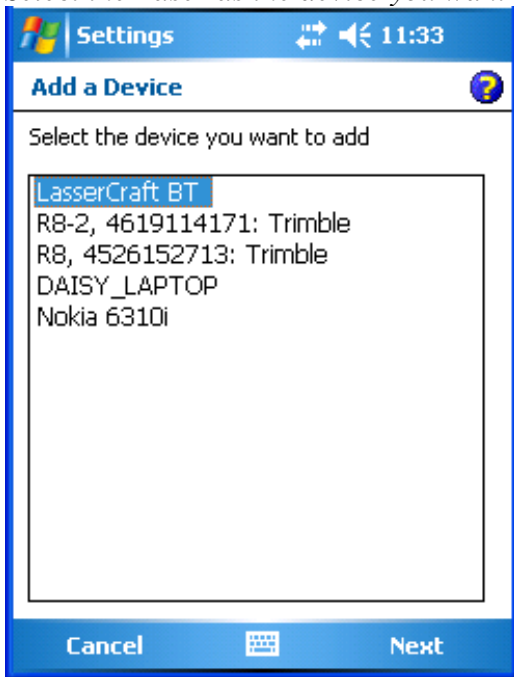
Your device should now be in your list



On COM port page, select “New Outgoing Port”

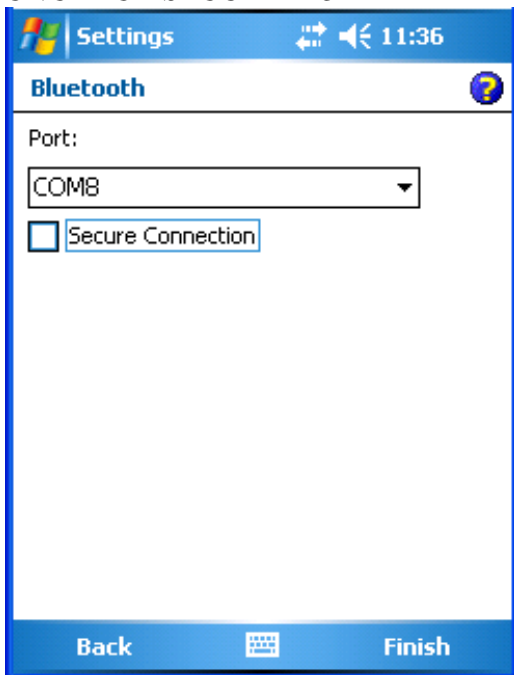


Select the Laser as the device you want to add. Tap Next.



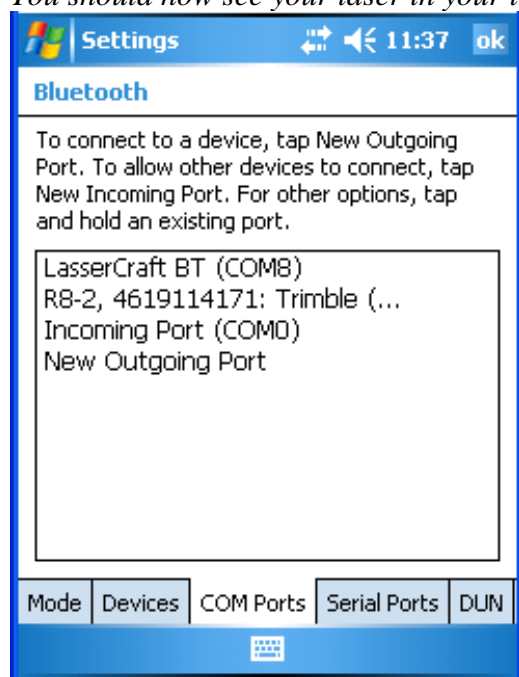
Choose a COM port.

UNCHECK SECURE MODE



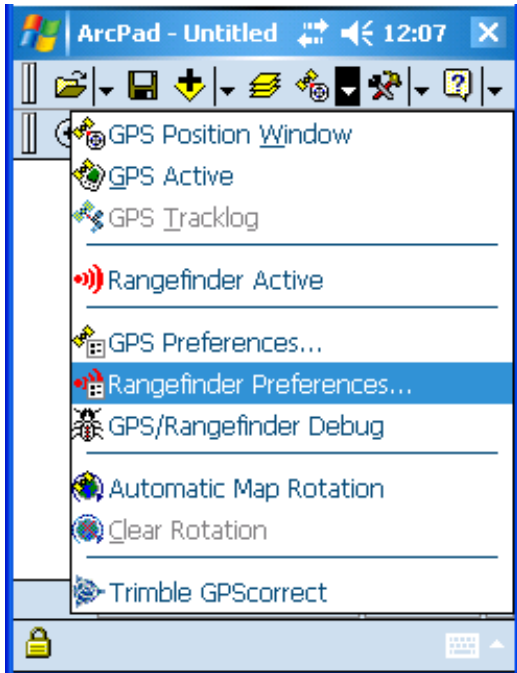
Tap Finish

You should now see your laser in your list.

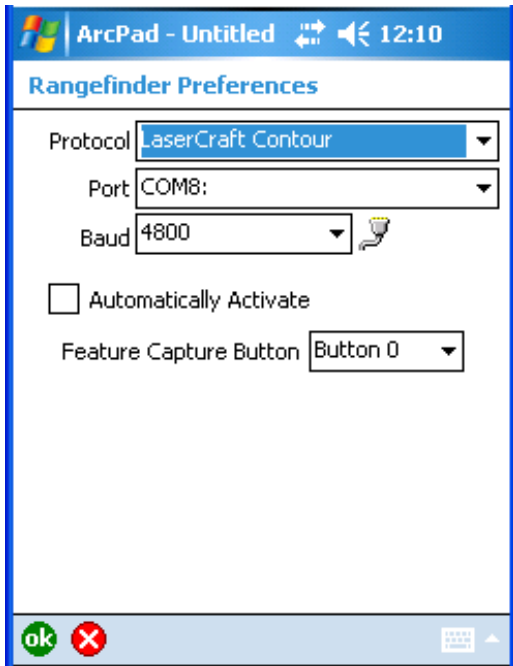


Configure Laser in ArcPad

Tap the dropdown next to the satellite, select Rangefinder Preferences...

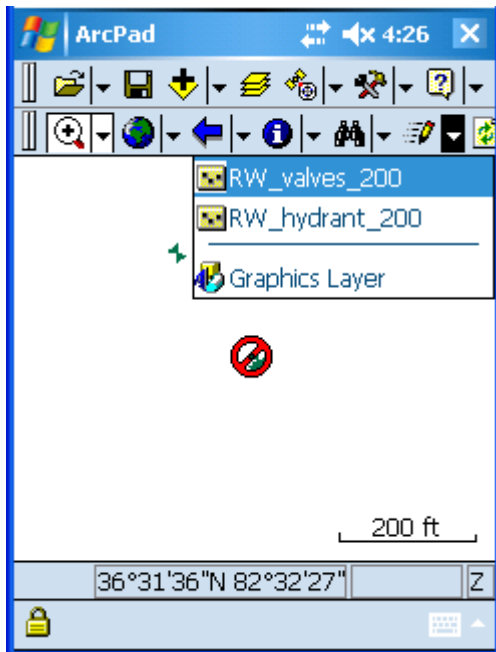


Choose Protocol, COM port, baud, and Button 0. Click OK.



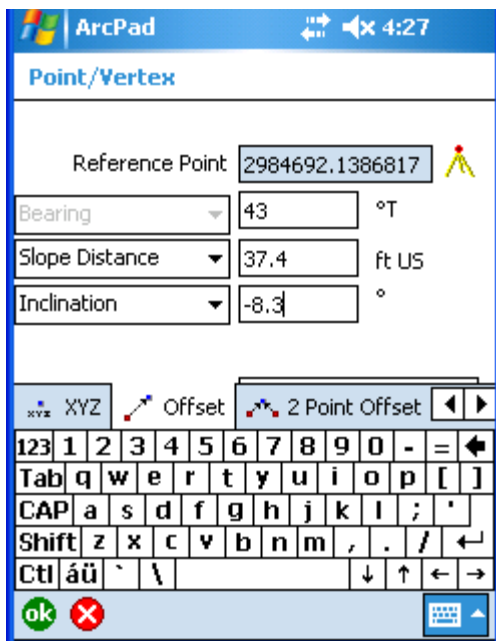
Creating an Offset Point in ArcPad

Select Point feature to collect from Pencil dropdown

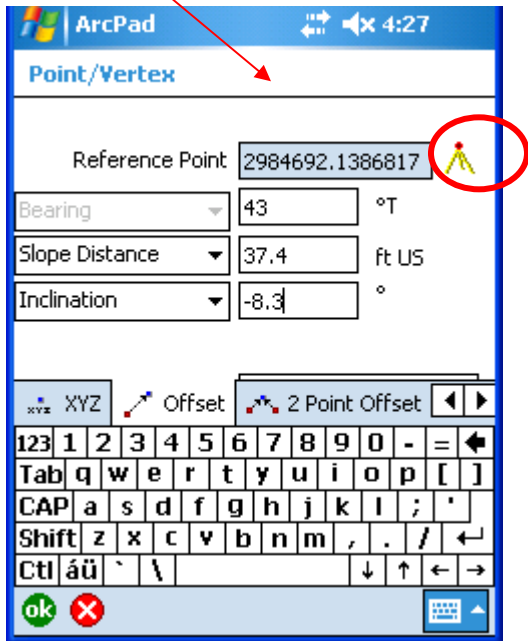


Shoot Laser at object. You will hear the Laser beep, then ArcPad will chime.

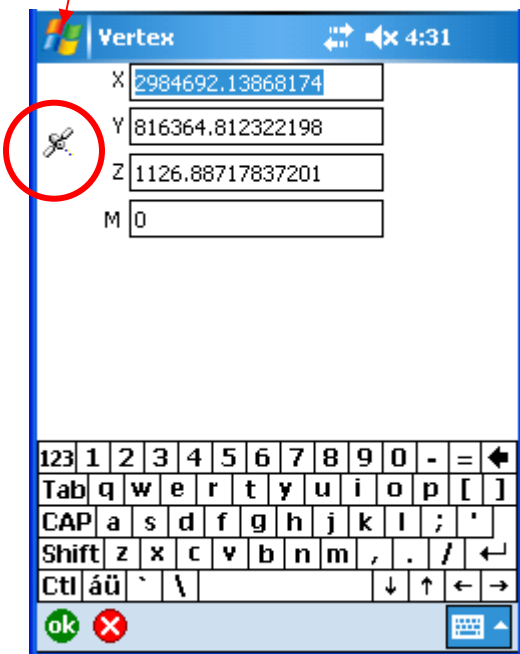
Offset menu will appear.



Tap the Tripod icon

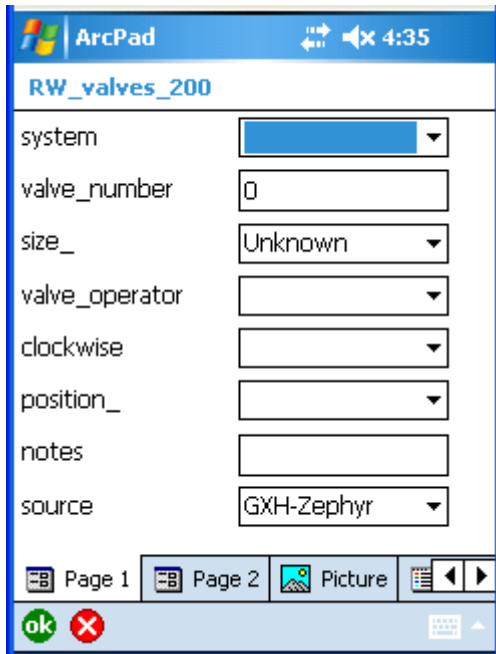


Tap the satellite icon. This will collect multiple positions that will be averaged together to create the offset point.



Wait until all positions are collected. Once collected, choose OK.

Enter attributes.



The screenshot shows the ArcPad application interface. At the top, the status bar displays the ArcPad logo, signal strength, and the time 4:35. Below the status bar, the title bar reads 'RW_valves_200'. The main area contains a data entry form with the following fields:

| | |
|----------------|---|
| system | <input type="text"/> |
| valve_number | <input type="text" value="0"/> |
| size_ | <input type="text" value="Unknown"/> |
| valve_operator | <input type="text"/> |
| clockwise | <input type="text"/> |
| position_ | <input type="text"/> |
| notes | <input type="text"/> |
| source | <input type="text" value="GXH-Zephyr"/> |

At the bottom of the form, there is a navigation bar with buttons for 'Page 1', 'Page 2', 'Picture', and navigation arrows. Below the navigation bar, there are two buttons: a green 'ok' button and a red 'cancel' button.

Click OK. Your point is stored.

