

S1 TITAN/TRACER 5/CTX

- **Bruker Toolbox Installation Guide**

1.7.0.128



This page intentionally left blank.



Table of Contents

1. Introduction and Requirements	5
2. Setting User Access Control.....	6
3. Installing Bruker Toolbox	8
4. Connecting the Instrument	12
Appendix A C++ Redistributable.....	14
Appendix B Installing the Driver	15
Appendix C Working with a Firewall	17

This page intentionally left blank.



1. Introduction and Requirements

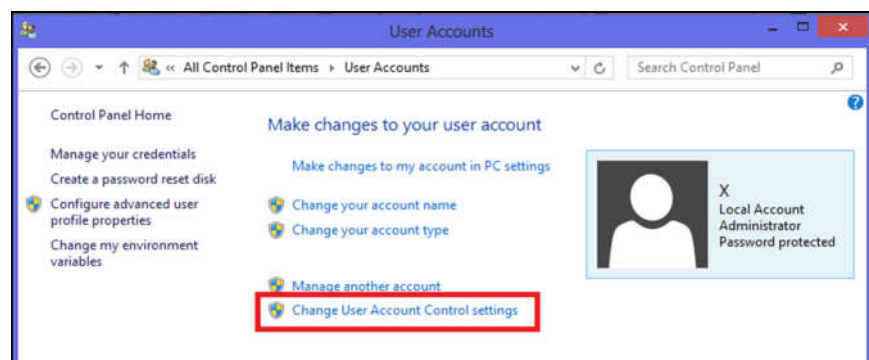
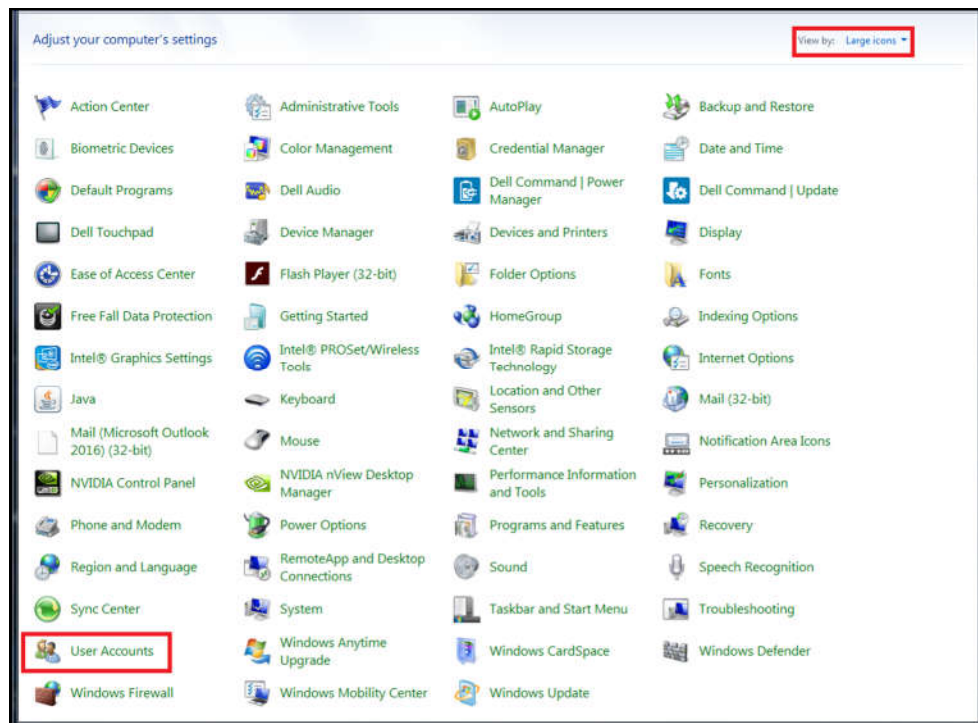
Description	<p>Bruker S1 TITAN, TRACER 5, and CTX instruments can be operated remotely from a PC with –</p> <ul style="list-style-type: none">• Windows operating system 7, 8.1, or 10.• Bruker Toolbox, part number 710.0042, included on the Bruker USB stick <i>User Manuals, Toolbox, Videos</i>, part number 160.0209. <p>This manual describes how to install Bruker Toolbox onto a PC. Windows administrator rights are required.</p>
Microsoft requirements	<p>Bruker Toolbox software requires appropriate Microsoft support packages –</p> <ul style="list-style-type: none">• .NET 4.6.2 or higher.• Visual C++ Redistributable package.
.NET	<p>If the available version of .NET is not 4.6.2 or higher, the installation process is exited. To install the latest version, go to https://www.microsoft.com/en-us/download/details.aspx?id=55170 or search Google for “.NET download.”</p>
IP address	<p>The S1 TITAN, TRACER 5, and CTX default IP address is 192.168.137.139. To change the IP address, from the Ready to Test screen on an instrument, tap Utilities -> Connections -> Connection -> USB tab or Wireless tab. See the <i>Supervisor Manual</i>, Bruker document 030.0113.</p>
Contacting Bruker	<p><i>Email:</i> support.hmp@bruker.com <i>Address:</i> 415 N. Quay Street <i>Phone:</i> +1 (509) 783-9850, Option 4 Kennewick, WA 99336 USA <i>Web:</i> www.bruker.com/hhxf</p>

2. Setting User Access Control

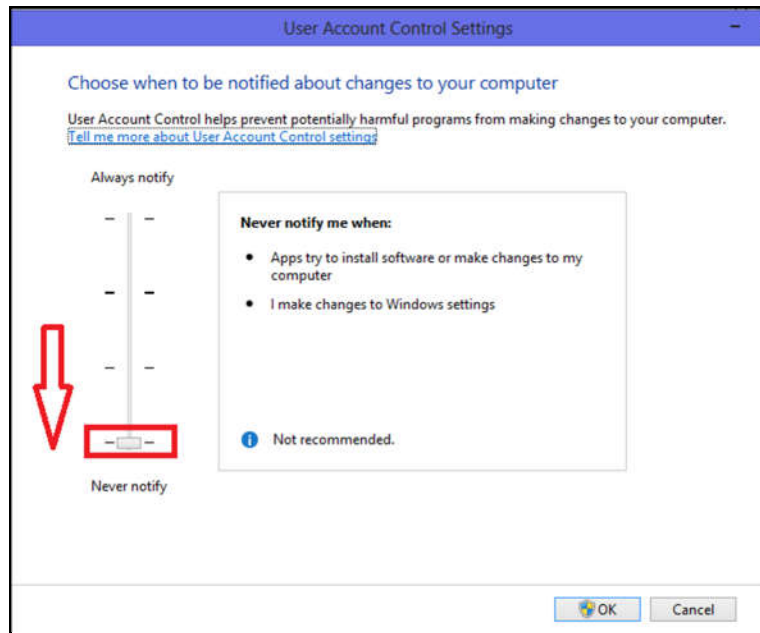
Description Before installing Bruker Toolbox, the User Access Control must be set.

Process *To change User Account Control settings in Windows –*

Step	Action	Result
1	On the PC, open the Control Panel .	The Control Panel window is displayed.
2	Select User Accounts .	The User Accounts window is displayed.



3	Click Change User Account Control settings .	The User Account Control Settings dialog box is displayed.
4	Drag the slider down and click OK .	The change is saved and the dialog box is closed.



3. Installing Bruker Toolbox

Description This section describes how to install Bruker Toolbox onto a PC. The two different methods are based on whether Toolbox was installed previously. If so, the old version is automatically uninstalled, with one exception, as described below.

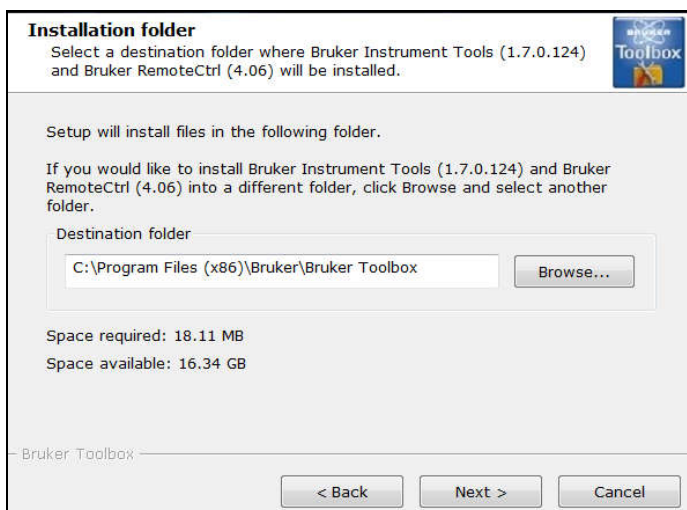
Exception: In the case of Bruker Toolbox version 1.6.0.110, before a new version can be installed, version 1.6.0.110 must be explicitly uninstalled using **Windows Start -> Control Panel -> Programs and Features**. Right click **Bruker Toolbox** and click **Uninstall**.

Process if not installed previously *To install Bruker Toolbox onto a PC for the first time –*

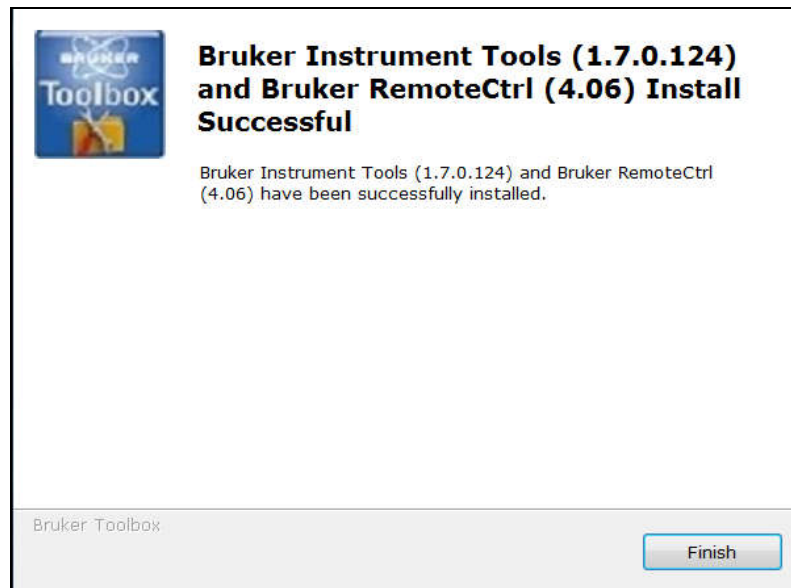
Step	Action	Result
1	Disconnect the instrument from the PC.	
2	Install the provided USB stick, part number 160.209. Navigate to and double-click the Bruker Toolbox file name or download from the Bruker website.	The Bruker Instrument Tools and Bruker RemoteCtrl Installation dialog box is displayed.



3	Click Next .	The Installation Folder dialog box is displayed.
---	---------------------	---

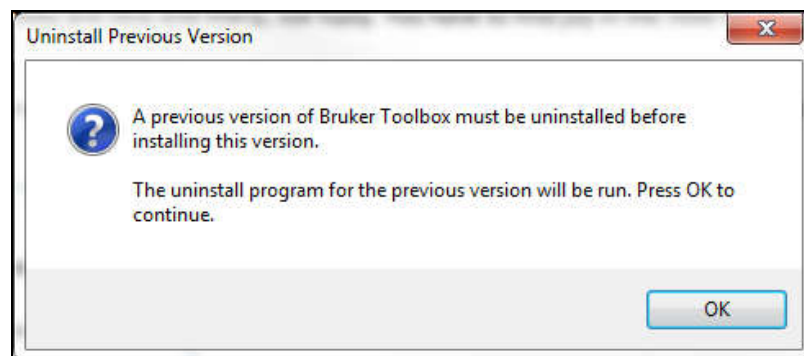


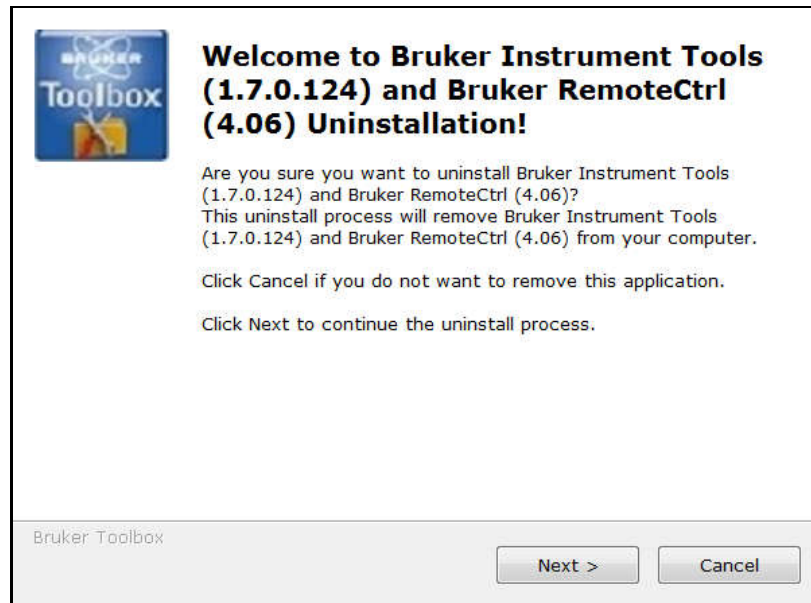
4	<p>Accept the default folder by clicking Next.</p> <p>OR</p> <p>Change the destination folder by –</p> <ol style="list-style-type: none"> 1. Clicking Browse... 2. From the Browse for Folder dialog box, selecting a folder and clicking OK. 3. Clicking NEXT. 	<p>The Installing Files progress box is displayed briefly, then the Bruker Instrument Tools and Bruker RemoteCtrl Install Successful dialog box.</p> <p><i>If a previous version is already installed, the Uninstall Previous Version dialog box is displayed. See the following table for steps.</i></p>
5	Click Finish .	Bruker Instrument Tools and Bruker RemoteCtrl icons are displayed on the desktop.



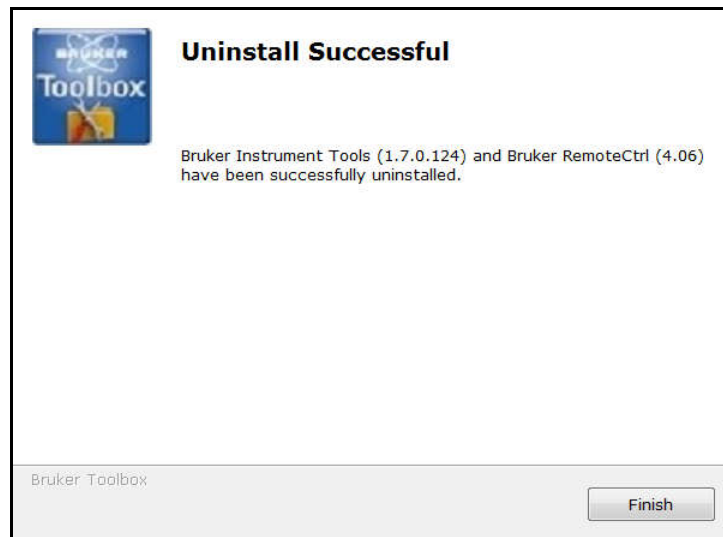
Process if previously installed

Step	Action	Result
1	Starting at Step 4 of the previous table, click OK on the Uninstall Previous Version dialog box.	After a moment, the Bruker Instrument Tools and Bruker RemoteCtrl Uninstallation! dialog box is displayed.

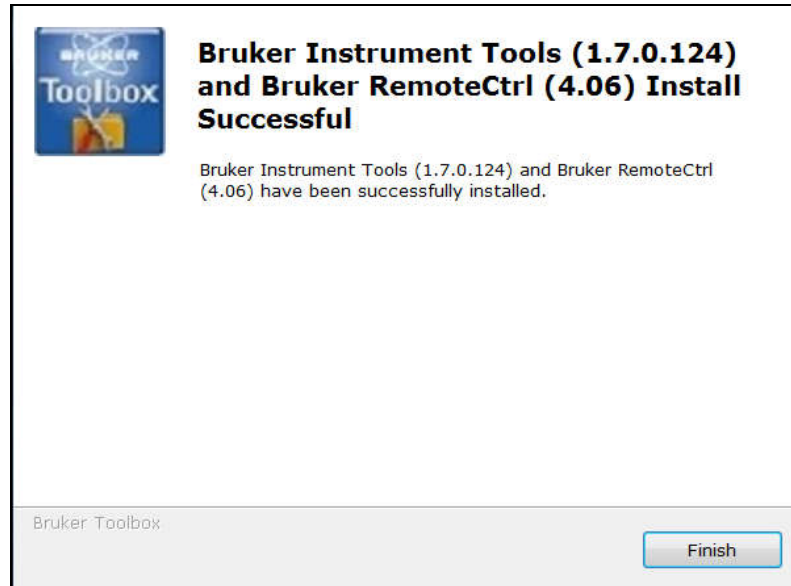




2	Click Next .	A progress bar is displayed briefly, then the Uninstall Successful dialog box.
---	---------------------	---



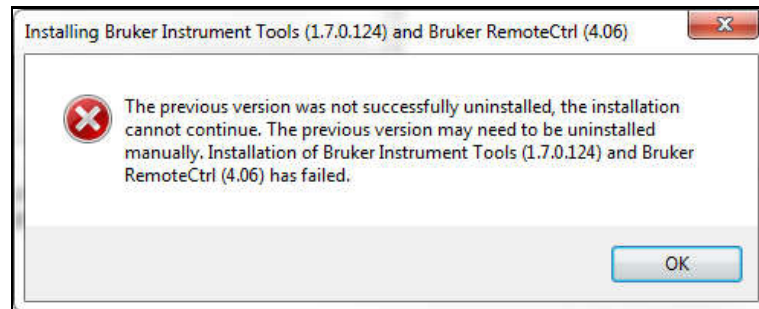
3	Click Finish .	The Installing Files progress box is displayed briefly, then the Bruker Instrument Tools and Bruker RemoteCtrl Install Successful dialog box.
---	-----------------------	---



4	Click Finish .	Bruker Instrument Tools and Bruker RemoteCtrl icons are displayed on the desktop.
---	-----------------------	---

Cancelling
uninstallation

To cancel the uninstallation, click **Cancel** on an **Uninstalling** dialog box. The following dialog box is displayed.




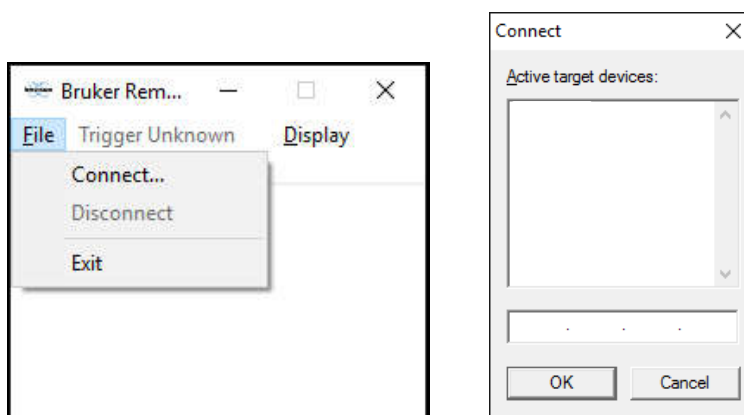
Click **OK**.

4. Connecting the Instrument

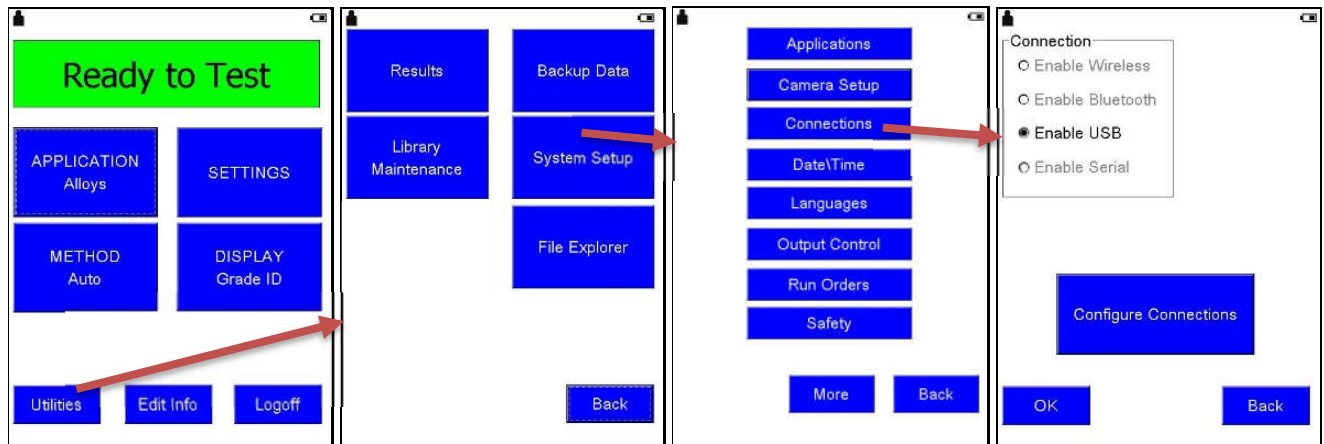
Description To finalize the driver installation *for the first time only*, connecting the instrument to the PC through a USB cable is recommended.

Process *To connect the instrument to the PC –*

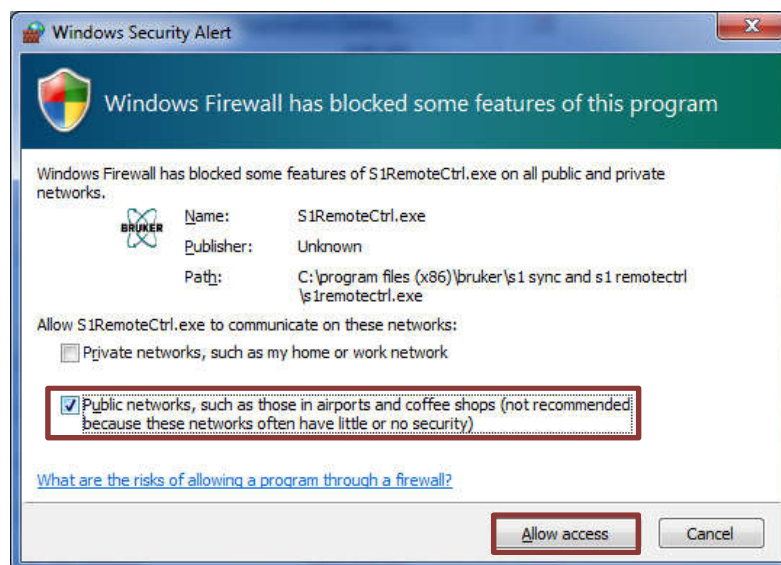
Step	Action	Result
1	Power on the PC and the instrument.	
2	Connect the instrument to the PC with a USB cable (Bruker part number 160.0012.01.0).	
3	On the PC, double-click the Bruker RemoteCtrl icon. 	The Bruker RemoteCtrl window is displayed.
4	Click File .	A dropdown list is displayed.
5	Click Connect .	The Connect popup is displayed.



6	Log into the instrument in Supervisor mode and follow instructions on the instrument screen. The default password is 54321.	The Ready to Test screen is displayed.
7	On the instrument, tap Utilities -> System Setup -> Connections .	The Connection screen is displayed.



8	On the instrument, select USB Enable and click OK .	After a few minutes, the first time the PC and instrument are connected after the first time the driver is installed, the Windows Security Alert window is displayed on the PC. If not, see Working with a Firewall on page 17.
9	Check the box for Public network, such as ... and click Allow access .	After a few seconds, the instrument serial number is displayed in the Connect dialog box.
10	On the PC, click the instrument name and click OK .	After a few seconds, the instrument screen is displayed on the PC.

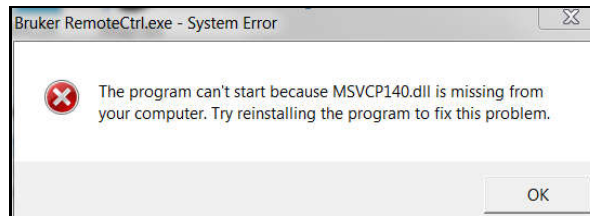


Appendix A C++ Redistributable

C++ Redistributable

The installation process should include automatic installation of .dll files. If not, see the following.

When accessing Bruker RemoteCtrl, if an error message stating that **msvcp140.dll and/or vcruntime.dll are missing** is displayed, Visual C++ Redistributable for Visual Studio 2015 must be installed.



To install msvc140.dll and/or vcruntime.dll –

Step	Action	Result
1	Navigate to www.microsoft.com/en-us/download/details.aspx?id=48145 .	The download page is displayed.
2	Click the red Download button.	A new page is displayed.
3	Select the vc_redist.x86.exe checkbox and click Next . Note: x86 version is required even on a 64-bit OS.	vc_redist.x86.exe is available at the bottom of the browser.
4	Click Save and Run .	The installation window is displayed.
5	Read, and click the box to agree to, the license terms and conditions. Click Install .	Libraries are installed in the appropriate location.

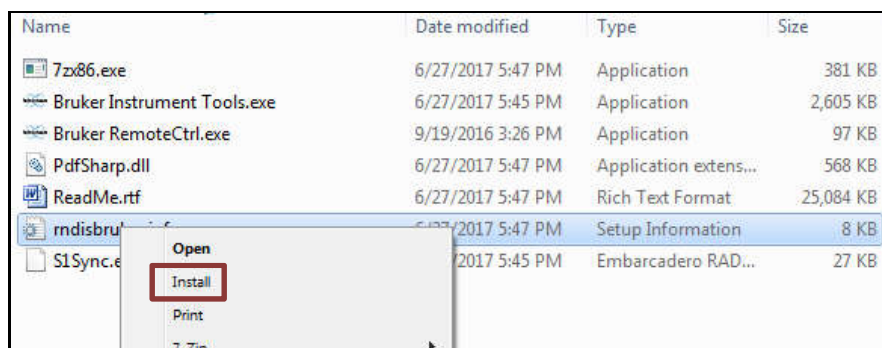
Appendix B Installing the Driver

Description The installation process should include automatic installation of the driver. If not, see the following.

This section describes how to manually install the driver for Windows operating systems 7, 8.1, or 10. *For subsequent installations of Bruker Toolbox, these steps are not required as the driver is automatically installed.*

Process *To install the driver –*

Step	Action	Result
1	Power on the PC and the instrument.	
2	Connect the instrument to the PC with a USB cable (Bruker part number 160.0012.01.0).	
3	Navigate to the folder containing Bruker Toolbox. The default location is C:\Programs Files (x86)\Bruker\Bruker Toolbox\ .	
4	Right click on the file name appropriate to the operating system. Windows 7 – rndisbruker.inf Windows 8.1 and 10 - brukerrndis.inf	A dropdown list is displayed.
5	Click Install .	The Windows Security dialog box is displayed.
6	Select Install this driver software anyway .	The message Device driver software installed successfully is displayed. If the message Device driver software was not successfully installed , unplug the USB cable, wait 15 seconds, and plug it in again.





Appendix C Working with a Firewall

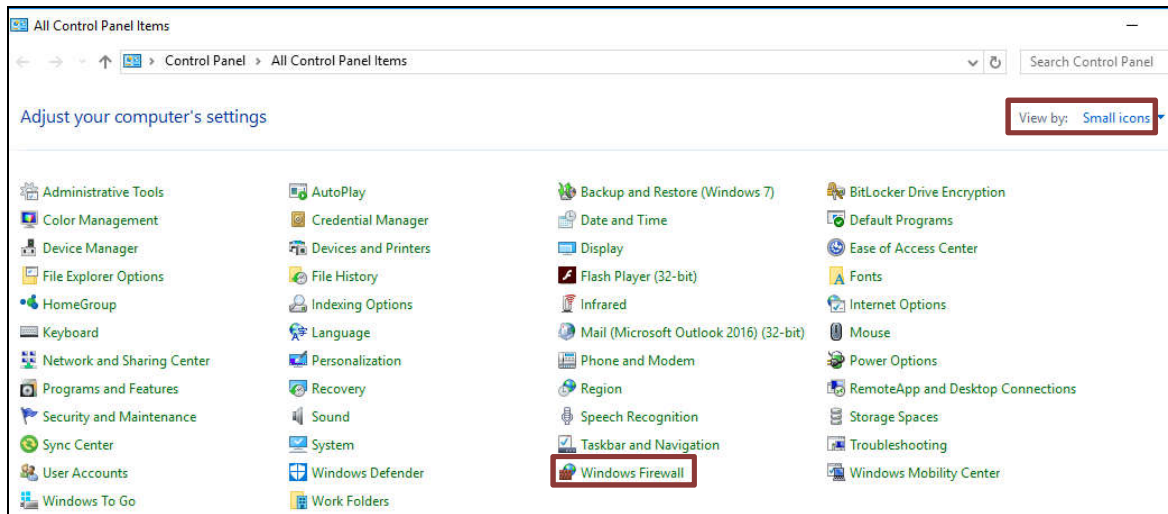
Description The installation process should include automatic access through a firewall. If not, see the following.

A firewall may interfere with the connection between a PC and an instrument and prevent the instrument serial number from displaying in the **Connect** dialog box. This section describes how to work around a firewall by deleting certain firewall rules.

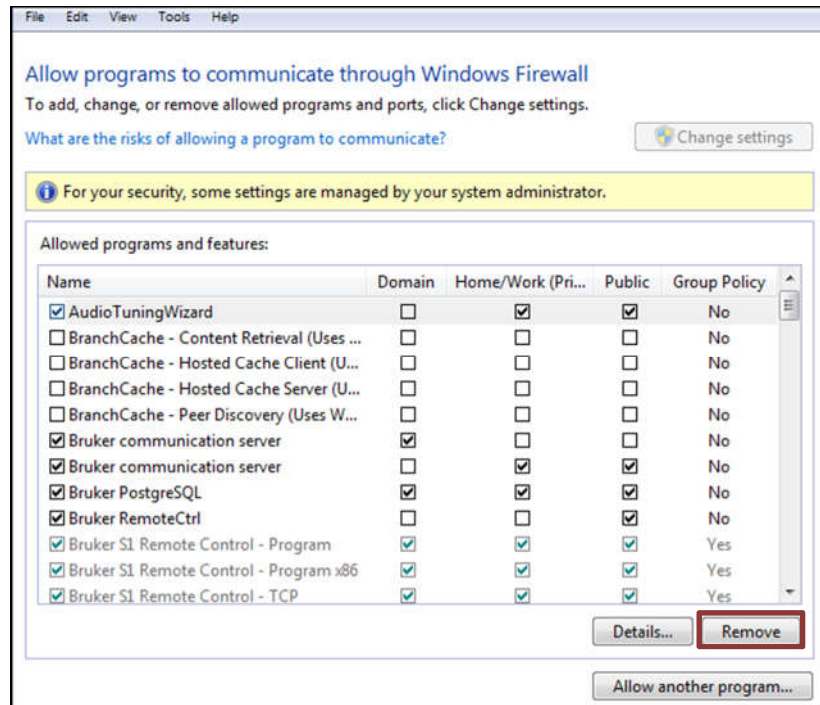
Port numbers Fixed port numbers are 55000, 55101, 55102, 55203. Artax uses 55204. Data Stream uses 55001, 55204, 55205, and 55500. These must stay open.

Process *To delete firewall rules that block Bruker programs –*

Step	Action	Result
1	On the PC, open the Control Panel .	The Control Panel window is displayed.
2	Click Windows Firewall .	The Windows Firewall window is displayed.



3	Click Allow a program or feature through Windows Firewall .	The Allow programs to communicate through Windows Firewall window is displayed.
---	--	--



4	<p>For each program to be deleted, highlight the name and click Remove. Remove the follow programs:</p> <ul style="list-style-type: none"> • All entries that start with S1RemoteCtrl, e.g., S1RemoteCtrl, S1 RemoteCtrl, S1 RemoteCtrl.exe. • S1 Sync. • Bruker Instrument Tools. • Bruker RemoteCtrl. 	The window reflects the changes.
5	Close all windows.	
6	Repeat the steps in Connecting the Instrument on page 12 for both Bruker RemoteCtrl and Bruker Instrument Tools.	