

EasyCal

- **S2 Configuration**





Table of Contents

1. S2 CONFIGURATION and the configuration files	3
2. Starting S2 CONFIGURATION	4
3. Overview of the main window	6
4. Managing the Users database	8
4.1. Presentation of the Users database.....	8
4.2. Managing the list of Users	9

1. S2 CONFIGURATION and the configuration files

- 1.1. The configuration files contain the description of the hardware, the parameters of the detector and of the amplifier, and the User's list. They are used by:
- 1.1.1. S2 LINE LIBRARY and LIB MANAGER: the amplifier settings stored for each line are retrieved from the configuration files;
 - 1.1.2. EVAL2 and automatic evaluation: for the spectrum fitting method, the simulation of the spectrum uses the amplifier settings stored in the configuration files;
 - 1.1.3. The login procedure and the management of access rights (the User names, passwords and access rights are stored in the configuration files).
- 1.2. The objective of S2 CONFIGURATION is to **display** the content of the configuration files and to **modify** them.

NOTE: The administrators should only edit the **Users** tab, i.e. the data related to the login and access rights. The other parameters should only be modified by a BRUKER AXS field engineer.

Configuration files			
File name	Icon	Location	Description
AmpSettings.DAT		on the spectrometer, in C:\S2\Databases	settings of the amplifier
FilterWheel.DAT		on the spectrometer, in C:\S2\Databases	list of the filters on the filter
S2-Configuration.CNF		on the attached computer, in EASYCAL installation directory	description of the detector
Users.DAT		on the attached computer, in EASYCAL installation directory	User names, passwords and access rights

2. Starting S2 CONFIGURATION

2.1. Normally, S2 CONFIGURATION is launched from SPECTRA LAUNCHER (EASYCAL):

2.1.1. Start the SPECTRA LAUNCHER (EASYCAL).

2.1.2. When no Spectra Plus (EASYCAL) session is running, a warning message appears (See Figure 1); click on **OK**.

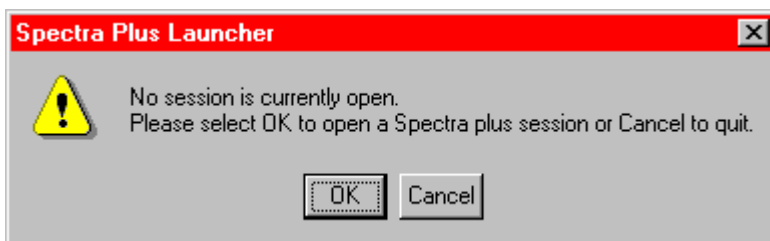


Figure 1

2.1.3. The Spectra EDX (EASYCAL) Login dialog box appears. (See Figure 2.) Type your **User name** and **Password** and click **OK**;

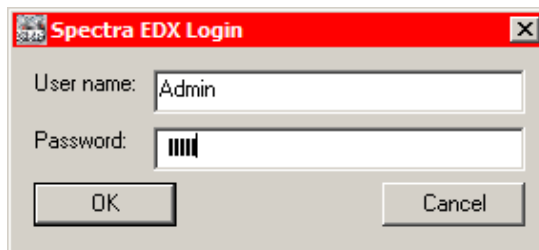


Figure 2

The SPECTRA Launcher (EASYCAL) dialog box appears; click on **Tools**. (See Figure 3.)

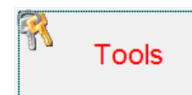


Figure 3

2.1.4. In the menu that appears, choose **S2Configuration**. (See Figure 4.)

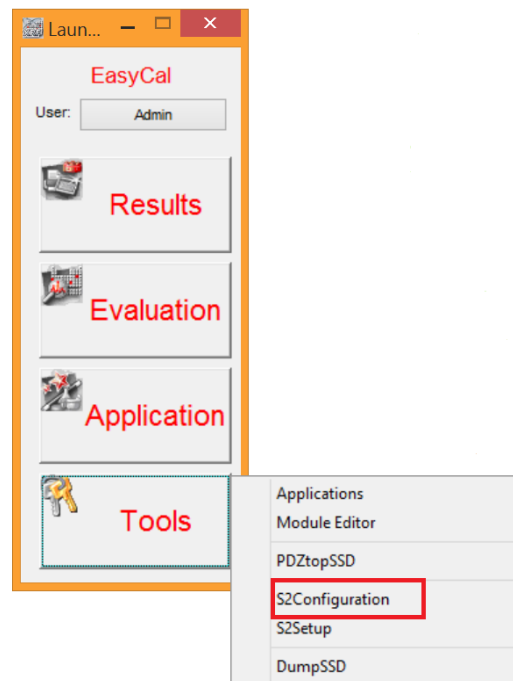


Figure 4

NOTE: You must be logged with a User account that has the administrator rights, otherwise you cannot open S2 CONFIGURATION or have access to the **System tools** button of EASYCAL.

3. Overview of the main window

3.1. The main window has four tabs, that allows easy access to the data of interest:

3.1.1. **Users:** manages the User's name, password, access rights;

3.1.2. **Detector:** detector's settings;

3.1.3. **Filters:** description of the filters installed in the filter wheel;

3.1.4. **Amp settings:** parameters of the amplifier and of the numerical filters used for the signal processing.

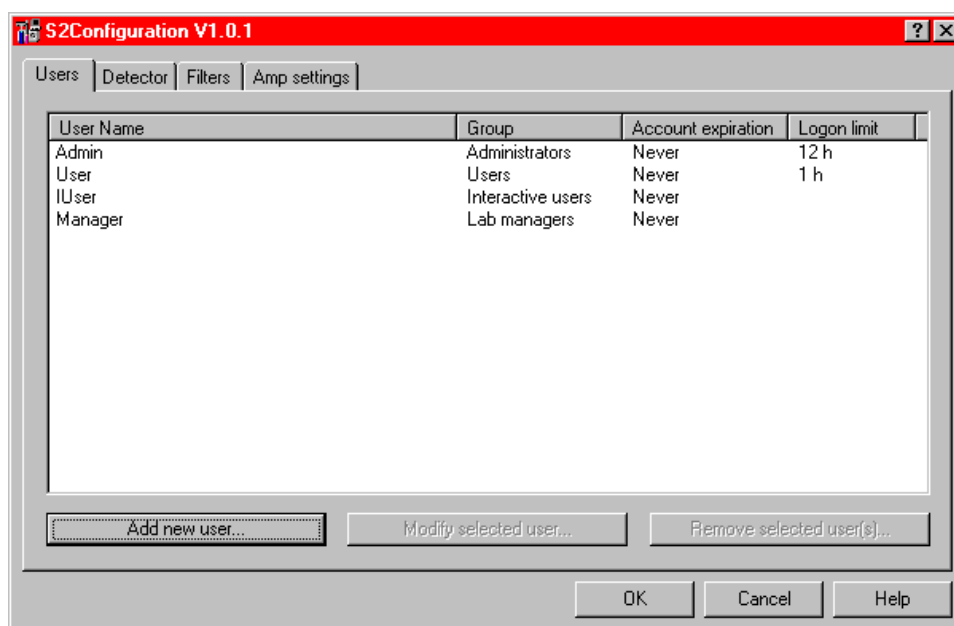


Figure 5

3.2. Each tab has its own specific buttons related to the data.

NOTE: Most data are very sensitive and **should only be modified by a trained field engineer**. The only tab that should be handled by an administrator is the **Users** tab.

4. Managing the Users database

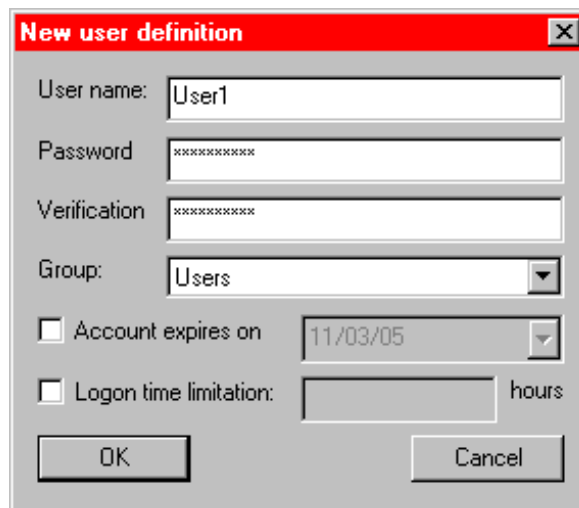
4.1. Presentation of the Users database

- 4.1.1. The good management of the Users database can help protect the data and allow the traceability of the data.
- 4.1.2. The Users database is a list of Users. Each User has a:
 - **User name:** this User name is written in the measurement file (SSD file) and in the Results database;
 - **User password:** only the people who know the password can log with the corresponding User name;
 - **User group:** the group defines the access rights of the User;
 - **Account expiration date:** when the date expires, the User is deactivated (e.g. for a trainee or a temporary worker);
 - **Logon limit:** the User is automatically logged off passed this limit.
- 4.1.3. Even when only one operator uses the spectrometer, there should be at least two Users: one in the administrator group, to perform the maintenance operations, and one in the **IUser** group (interactive User) to perform the everyday operation. Thus, there is no risk of accidentally modifying a calibration or an important parameter.
- 4.1.4. There are two extreme ways to configure the Users database:
 - **Flexible:** When your organization does not need a strict control, you can create just one User with no logon limit; the same User name will be associated with all measurements and evaluation, whoever the people are who performed them;
 - **Strict:** Every operator has his own User name and a secret password. The operator must log off when they leave the workstation to be sure that another operator cannot work with their User name, and the logon limit is short enough to be sure this cannot occur when an operator forgets to log off.
- 4.1.5. In **Strict** configuration, only a few persons may have a User account in the Administrators or Lab managers group.

4.2. Managing the list of Users

4.2.1. To create a new User:

- Click on the **Add new user...** button in the Main window (See Figure 5.)
- This displays the **New user definition** dialog box. (See Figure 6.)
- Fill in the field and choose the relevant options;
- Click **OK**.



The image shows a dialog box titled "New user definition" with a red header bar and a close button (X) in the top right corner. The dialog contains the following fields and options:

- User name:** A text input field containing "User1".
- Password:** A text input field containing "*****".
- Verification:** A text input field containing "*****".
- Group:** A dropdown menu with "Users" selected.
- Account expires on:** A date field containing "11/03/05".
- Lologon time limitation:** A text input field followed by the word "hours".
- OK** and **Cancel** buttons at the bottom.

Figure 6

4.2.2. Controls of the New User Definition Dialog Box

Controls of the New User Definition dialog box	
Name	Description
User name (text box)	Name that must be typed when logging on, and that will be in the measurement files (SSD files) and in the Results database (Measure.MDB)
Password (text box)	Self-explanatory
Verification (text box)	Re-type the password to check there is no error
Group (drop-down list)	<p>There are four groups; the rights are cumulative (i.e. an interactive User also has the User's rights, a lab manager also has the interactive User's rights, and an administrator has all the rights):</p> <ul style="list-style-type: none"> • Users: can only launch a measurement and display the results using the Results Monitor; • Interactive users: can process a measurement with EVAL2 • Lab managers: can setup methods using S2 MEAS METHOD, S2 SETUP and S2 CALIBRATION WIZARD • Administrators: can edit the configuration with S2 CONFIGURATION
Account expires on (checkbox and calendar box)	<p>If the box is checked, then the account will be deactivated at the date specified in the calendar box, i.e. the operator will not be able to log on with this User name any longer;</p> <p>The date can be directly typed in the box, or chosen in a calendar by clicking on the downward arrow.</p>
Logon time limitation (checkbox and text box)	<p>When this box is cleared, the User is logged out only when an operator performs the logout.</p> <p>When the box is checked, EASYCAL automatically logs out after a given duration.</p> <p>The duration is typed in the text box, and expressed in hours. Decimal values are accepted (0.1 is six minutes), the minimum duration is one minute.</p>

4.2.3. To modify the parameters of an existing user:

- Double-click on the line of the User in the Users list
— or —
- Select the User in the Users list;
- Click on **Modify selected user**.

Note: This displays the New User Definition dialog box, see section 4.2.1.

4.2.4. To remove a User from the Users list:

- Select the User in the Users list;
- Click on **Remove selected user(s)**.

Note: It is possible to remove several Users at once, using the Windows® multi-selection feature: hold the **CTRL** key down while selecting the users.